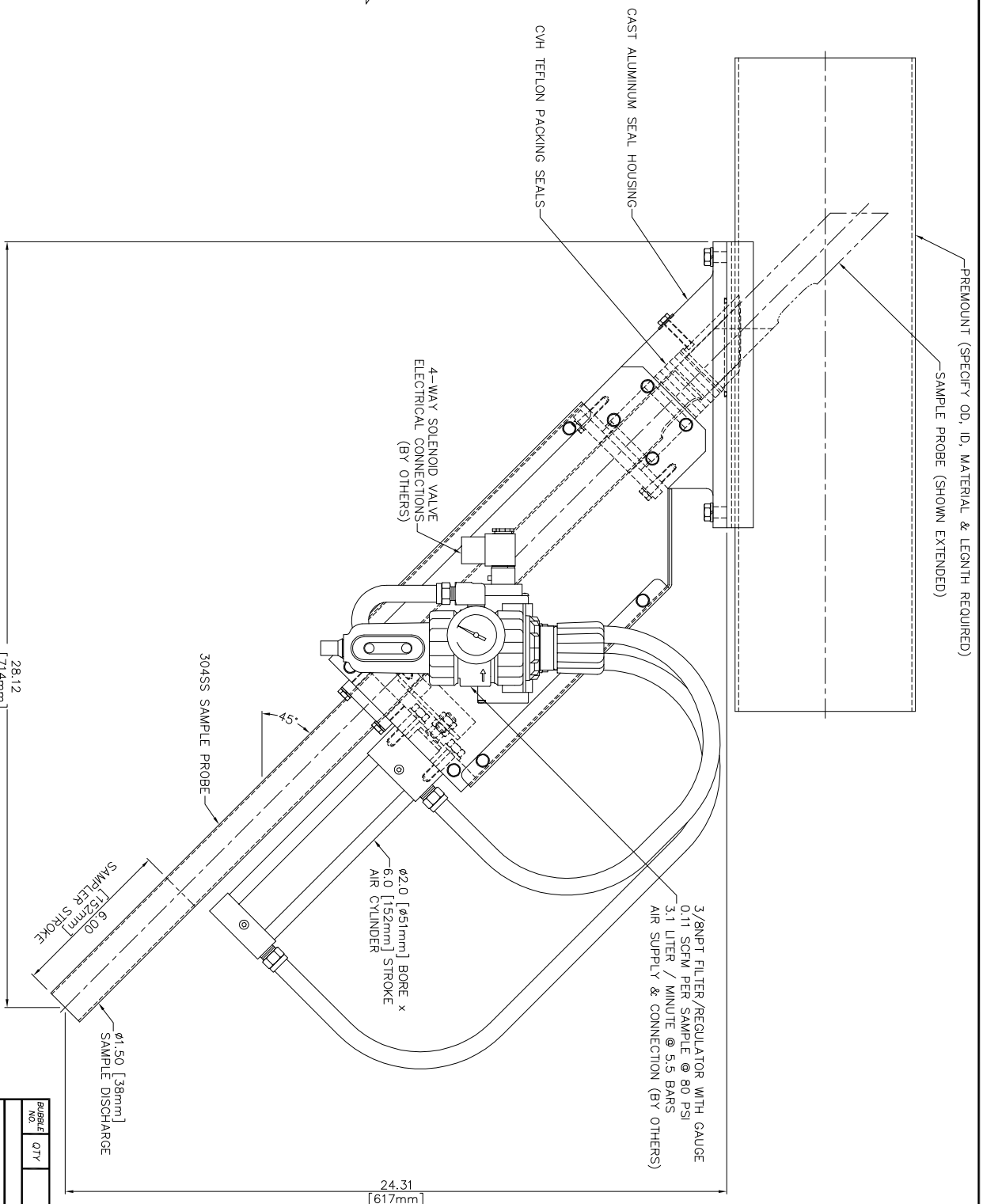


REVIEWS		20230H
REV	DATE	DESCRIPTION
C	12/02	ADDED METRIC DIMENSIONS
		JDB



SPECIFY DIRECTION OF MATERIAL FLOW  
(EITHER STD HORIZ OR REVERSE HORIZ)

**FOR REFERENCE ONLY**  
INFORMATION SUBJECT TO CHANGE WITHOUT NOTICE  
SEE ENGINEERING FOR LATEST REVISION

QTY	DESCRIPTION or MATERIAL AND SIZE	ITEM NUMBER	TOTAL UNITS
<b>BILL OF MATERIALS</b>			
1	PT SAMPLER W/HORIZONTAL PREMOUNT	20230H	1
<p><b>TOLERANCES</b> MANUFACTURED TO TYPICAL SHOP TOLERANCES UNLESS OTHERWISE SPECIFIED</p> <p><b>THIRD ANGLE PROJECTION</b></p>			
QTY REQ'D	DESCRIPTION	DATE	REV
1	PT SAMPLER W/HORIZONTAL PREMOUNT	12/92	C
DWG BY	DATE	ITEM NUMBER	REV
RM	12/92	20230H	C
SCALE	3	ACAD FILE	20230H
		SHEET	1 OF 1

**InterSystems™**  
13330 I. St. Omaha, Ne. 68137 402-330-1500

QTY	DESCRIPTION or MATERIAL AND SIZE	ITEM NUMBER	TOTAL UNITS
1	PT SAMPLER W/HORIZONTAL PREMOUNT	20230H	1
<p><b>TOLERANCES</b> MANUFACTURED TO TYPICAL SHOP TOLERANCES UNLESS OTHERWISE SPECIFIED</p> <p><b>THIRD ANGLE PROJECTION</b></p>			
QTY REQ'D	DESCRIPTION	DATE	REV
1	PT SAMPLER W/HORIZONTAL PREMOUNT	12/92	C
DWG BY	DATE	ITEM NUMBER	REV
RM	12/92	20230H	C
SCALE	3	ACAD FILE	20230H
		SHEET	1 OF 1

PREMOUNT (SPECIFY OD, ID, MATERIAL & LENGTH REQUIRED)  
SAMPLE PROBE (SHOWN EXTENDED)  
CAST ALUMINUM SEAL HOUSING  
CVH TEFLON PACKING SEALS  
4-WAY SOLENOID VALVE ELECTRICAL CONNECTIONS (BY OTHERS)  
304SS SAMPLE PROBE  
45°  
6.00 [152mm] SAMPLE STROKE  
Ø1.50 [38mm] SAMPLE DISCHARGE  
Ø2.0 [Ø51mm] BORE x 6.0 [152mm] STROKE AIR CYLINDER  
3/8\"/>

28.12 [714mm]

24.31 [617mm]

4