

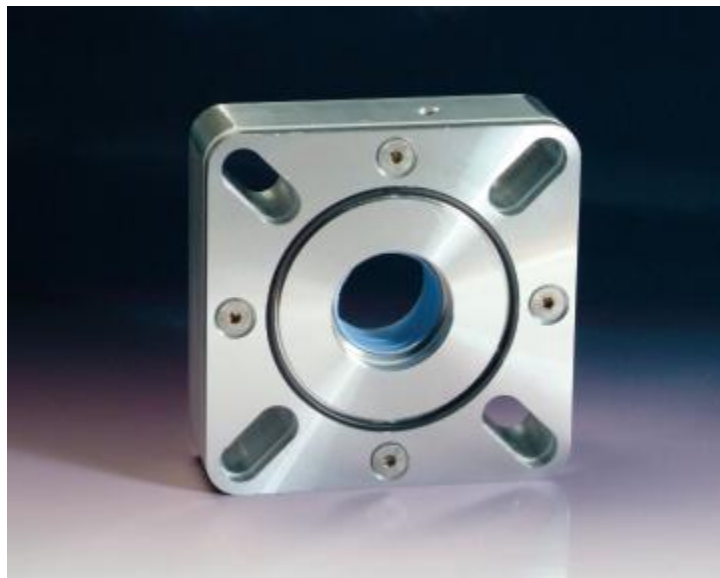
News November 2010

1. Partnership with Cinch seal
2. Expansion into new building
3. 1500mm diameter screw worm on pipe

Wrights Dowson Group announce becoming CinchSeal® distributor for the United Kingdom.

CinchSeal® shaft seals have proven effective in process systems handling dry and semi-solid products. Among the particularly challenging applications are systems handling silica flour, quartz powder and soda ash, among others.

- Zero maintenance due to unique self adjusting design
- Ideal for screw conveyors, bucket elevators and similar bulk solids applications
- Consumes 30% less power than packing
- Will not undercut shafts
- No leakage to foul bearings or contaminate processing areas
- Fully assembled, rugged modular design



Now available in standard anodised aluminium from stock in the UK.

Expansion into new premises

With a continuing expanding order book, Wrights Dowson Group expand into new premises and invests in new equipment to allow for manufacture of large stainless screw conveyors in a dedicated workshop.

1500mm diameter screw worm on pipe

Wrights Dowson Group have just completed manufacture of a 1500mm diameter worm on pipe 8500mm long, welded onto a 508 mm diameter centre tube with flange ends, all fabricated in mild steel.